

621.184.22

./ :+7-495-362-77-00; E-mail: mpisiney@mail.ru

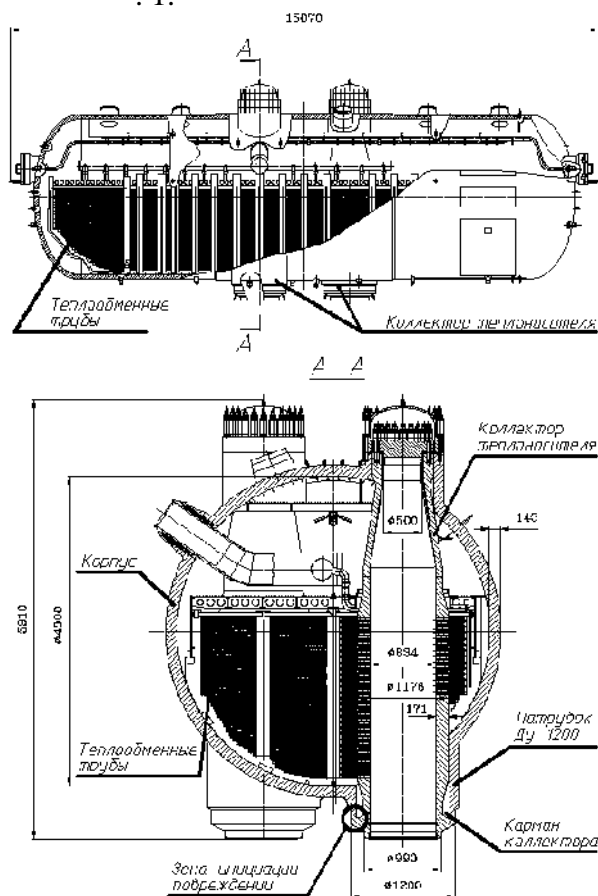
– 1000

-1000,

-1000,

-1000

. 1.

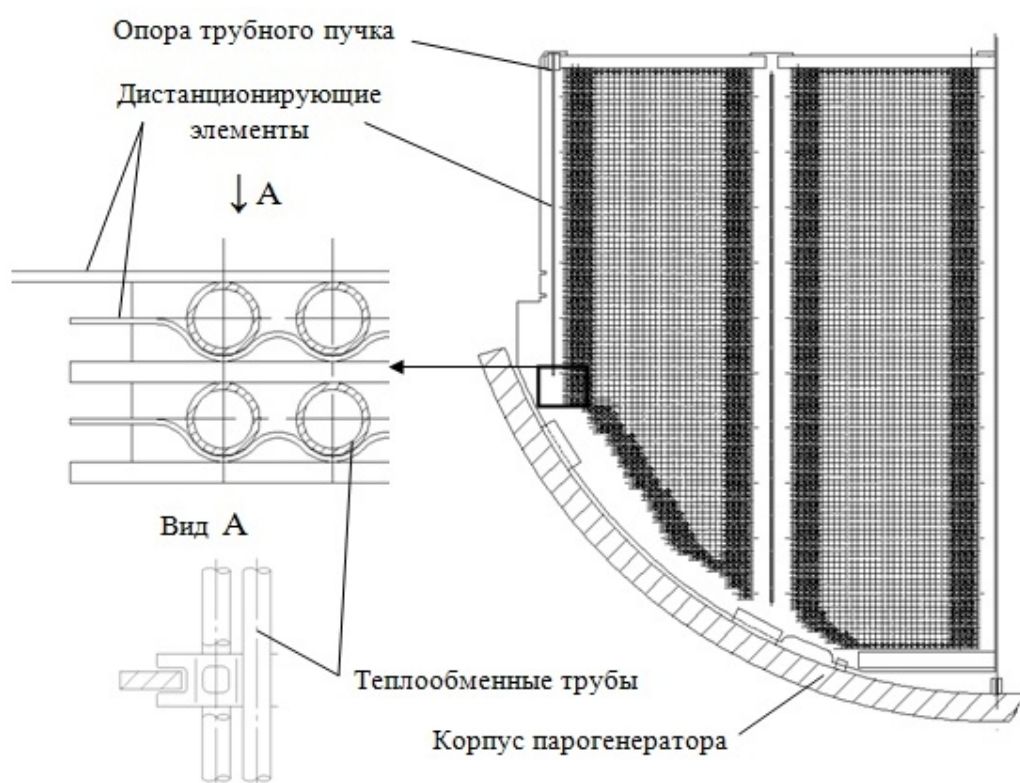


. 1.

-1000

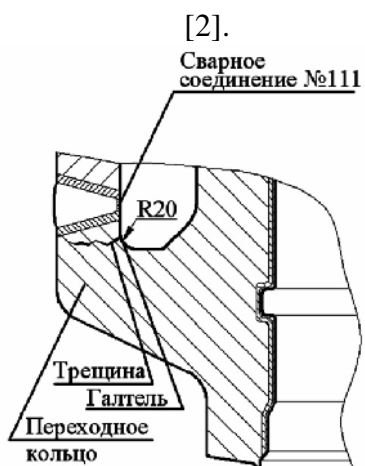
,
 (),
 .
 10 978 ,
 16 1,5 .

[1]. . 2



. 2.

1200 ()
 111. 1200 ()
 – « ».
 -1000, -
 1000 ,
 111 (. 3).



. 3.

[2]

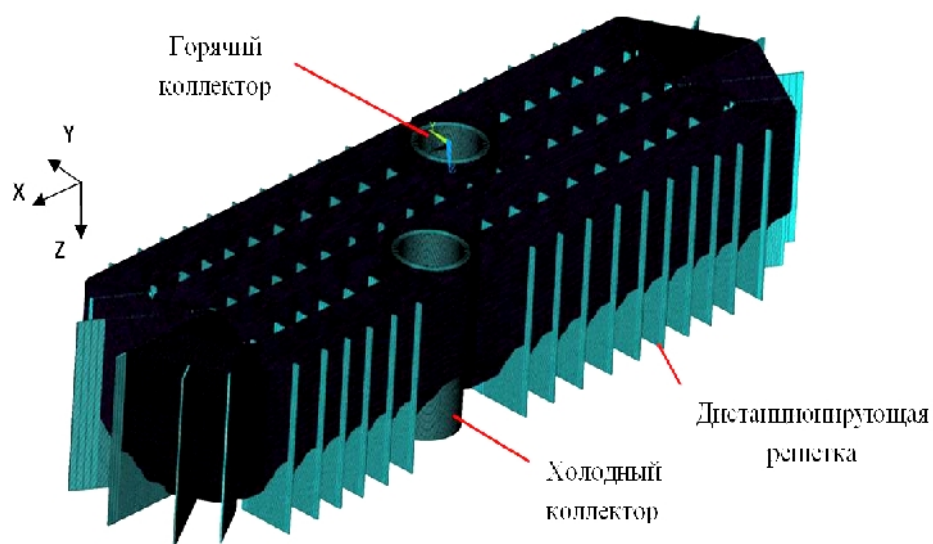
111

111

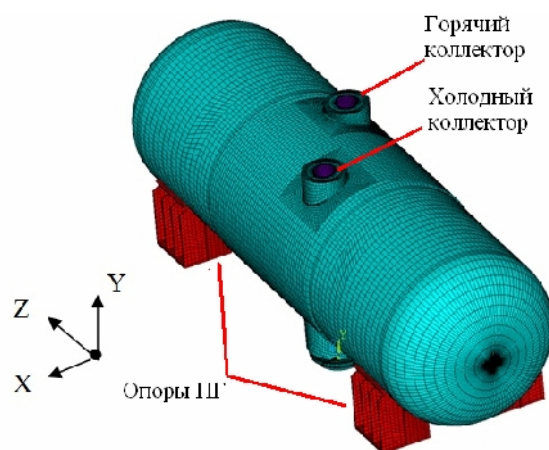
[3]

10 978

(. 4).



. 4.



. 5.

-1000

« » « »
(. 5).

15,68

6,27

– 278 ° , -
 « »
 « »
 1
 , -
 . FX, FY –
 . MX, MY –
 ,
 . 4. « » ,

1.

FX, .	FY, .	MX, .	MY, .	FX, .	FY, .	MX, .	MY, .
-0,156	-0,026	0,064	-0,164	0,159	0,041	-0,025	0,227

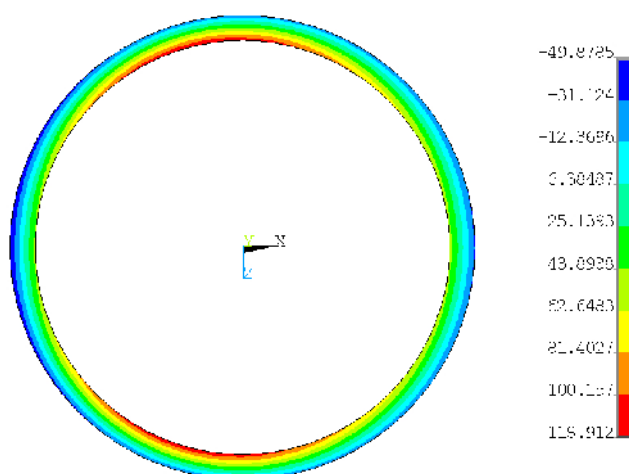
2
 , -
 .
 111,
 -

2.

FX, .	FY, .	MX, .	MY, .	FX, .	FY, .	MX, .	MY, .
-0,138	-0,068	0,096	-0,151	0,471	0,122	-0,126	0,580

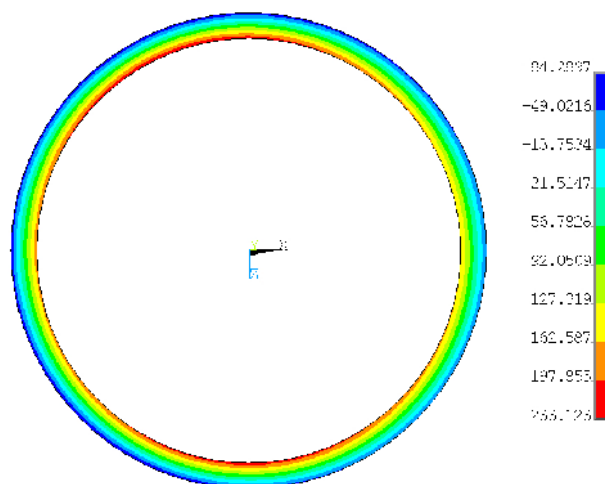
111
 « » , -
 , -
 , -
 .6 – 8
 ,
 - 111.

48%.



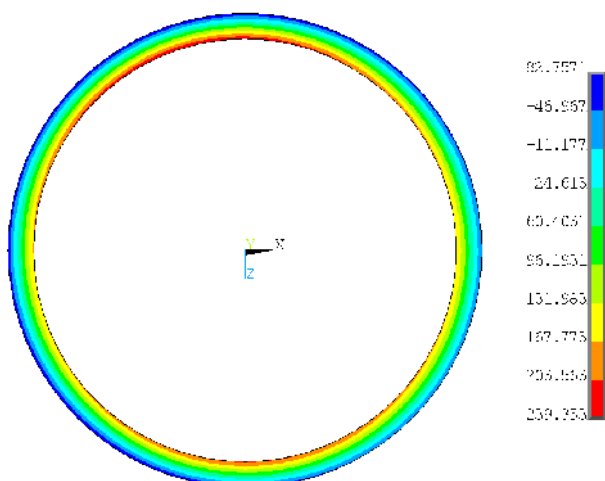
111 (. 6.

)



111 (. 7.

)



111 (. 8.

)

111. « » -
111. -
:
;
;
.
-
-
-
-1000
111.
:
1. , 2004
- 496 .
2. «
», 2004. – 391 .
3. , 2003. – 440 .

A. Lukowski, I. Drozhennikov,
V. Volokhovskii, A. Shipkov

**RESEARCH THE INFLUENCE OF POWER
TUBE BEAM AREA CONNECTION AND COL-
LECTOR CASE PWR NUCLEAR STEAM GEN-
ERATORS - 1000**

Influence of the tube bundle on the collector-case zone stress-strain state of a NPP steam generator is determined in the paper taking into account steam generator (SG) design peculiarities. Designed and varied regimes of SG heat exchanger tubes operation details are considered.

Keywords: collector-case zone, steam generator, stress-strain state, tube bundle.

10.06.2013 .